

CVC CAPE VILLA COLLECTION

Vitalumina- Hout Bay, Cape Town

Sleeps	8	Pool	Solar heated private pool
Bedrooms	4	Pool size	± 6x 3.5m
Bathrooms	4	Views	Sea and Mountain



Summary

Vitalumina offers beautiful sea and mountain views across the Hout Bay Valley from the upmarket Ruiteplaats Estate. Large property with solar heated pool. Modern designer home with spacious living areas and beautiful light through the many windows. The house consists of the main house sleeping 8.



CVC CAPE VILLA COLLECTION

Living

Modern open plan living areas leading to front and back patios. This self-catering fully equipped villa with TV, DStv, Wi-Fi, piano and contemporary furnishings. Open plan kitchen with white wooden finishes and a breakfast counter. Perfect to prepare a gourmet meal.



Leisure

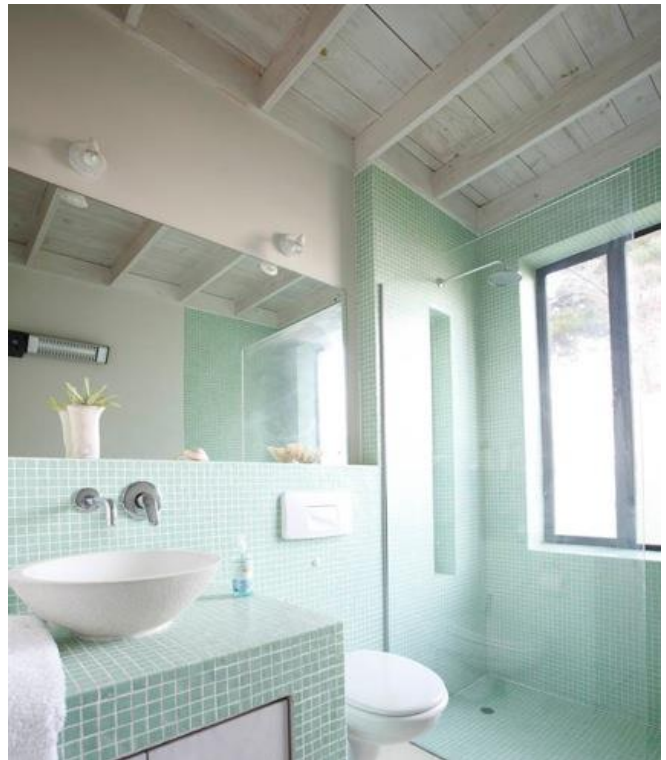
Two large entertaining decks (one leading from lounge the other from the dining area). The patio between kitchen and pool area with built in sofa, is perfect for barbecuing and entertaining. Garden with trampoline, jungle gym and big lawn with indigenous garden. The swimming pool (north facing) with solar heating provides perfect entertainment for families with children.



Bedrooms & Bathrooms

Bedroom 1	King size bed with en-suite bathroom.
Bedroom 2	Bunk beds.
Bedroom 3	Double bed.
Bedroom 4	King size bed.
Bathroom 1	Separate bathroom with shower, bath, basin and toilet.
Bathroom 2	Separate bathroom with shower, basin and toilet.
Bathroom 3	Shower, basin and toilet.
Bathroom 4	Outside bathroom next to the pool with toilet and warm shower.

CVC CAPE VILLA COLLECTION



Features and Facilities

Kitchen/Catering: Gas hob-electric oven / Fridge-Freezer / Microwave Oven / Kettle / Toaster / Coffee maker / Dishwasher /	Laundry Facilities: Washing machine / Tumble drier
Indoor: Dining seating for 8 / Bed Linen / Towels	Media: TV/ DStv(satellite channels) / Wi-Fi
Outdoor: Swimming pool / Outdoor seating / Outdoor dining / Beach Towels / BBQ Facilities	Children: Swimming pool safety net by prior arrangement / Jungle Gym / Trampoline

Additional Info

Breakage deposit	Applicable – per booking confirmation.
Parking	1 car garage, 2 cars in parking bay next to driveway
Security	Inside and outside alarm system, in security estate that is fenced with electrical fence and 24hr security guards on duty, property is linked to armed response ADT
Meals	No meals included. Self-catering only.
Remarks	There is a separate, private, cottage on the property where a permanent tenant resides.

Servicing

Weekdays	Cleaning service 3 times per week inclusive in the rate
Public holidays & weekends	Available on request at additional cost
Extra cleaning	Available on request at additional cost
Laundry	Personal laundry is not included
Pool and garden	Serviced once per week

Reservations

Rates and availability are subject to final confirmation.
 A standard rental agreement applies.
 A 50% deposit is required to confirm a booking.
 A booking fee applies.

GPS Co-ordinates

34° 2'9.43"S
 18°21'26.47"E

