

# CVC CAPE VILLA COLLECTION

## Villa De Arte – Welbeloond, Constantia, Cape Town

Sleeps	8	Pool	Private 13m x 4.5m pool
Bedrooms	4	Views	Mountain
Bathrooms	5	Beach	± 10km



### Summary

A magnificent thatched home situated amongst the wine farms of Constantia; where classic and contemporary come together in effortless unison. This luxurious private accommodation is situated in one of the most picturesque and tranquil surroundings in the Cape.



# CVC CAPE VILLA COLLECTION



## Living

A delight to the senses, you will be spoilt for choice with an abundance of light art-filled rooms that flow from one magical space to the next. Relax in one of the multiple spacious living areas with large windows showcasing the breathtaking landscape. The spacious open plan modern kitchen with state-of-the-art appliances is any chef's dream. Entertain and dine in style in the formal dining room, on the covered patio or in the purpose built entertainment area at the pool.



# CVC CAPE VILLA COLLECTION



# CVC CAPE VILLA COLLECTION

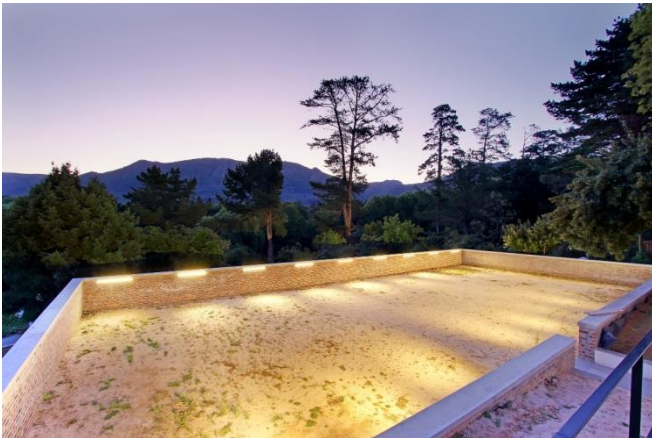


## Leisure

The numerous entertainment areas, both inside and out, will have the whole family happily occupied 24/7. Large stacking doors open up onto sweeping views down the valley or onto the entertainment area with pool, hot tub, fire pit, pool room and expansive garden with a cute tree-house for the kids. We love the unique "man cave" with TV lounge and table tennis as well as the private full size beach soccer field. For days out and about, Villa de Arte is in close proximity to the finest Cape vineyards and just 20 minutes from the beach.



# CVC CAPE VILLA COLLECTION

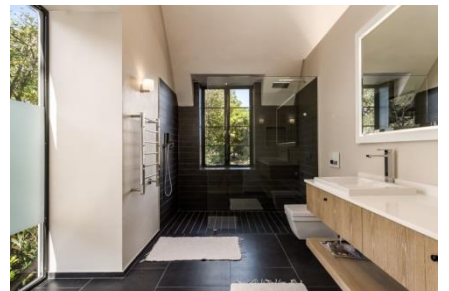


## Bedrooms & Bathrooms

Bedroom 1	Master bedroom with King size sleigh bed, dressing room, doors to balcony with expansive views to the horizon, en-suite bathroom
Bedroom 2	Queen bed, mountain and garden views, en-suite bathroom
Bedroom 3	Queen bed, mountain and pool views, en-suite bathroom
Bedroom 4	Queen bed, mountain and pool views, en-suite bathroom
Bathroom 1	En-suite to master with feature bath, double shower, double vanity, separate toilet
Bathroom 2	En-suite to bedroom 2 with bath, shower, basin, toilet
Bathroom 3	En-suite to bedroom 3 with bath, shower, basin, toilet
Bathroom 4	En-suite to bedroom 4 with shower, basin, toilet
Bathroom 5	The man-cave has a shower-room



# CVC CAPE VILLA COLLECTION



### Features and Facilities

Kitchen/Catering:	<ul style="list-style-type: none"> <li>• Gas hob-electric oven</li> <li>• Fridge-Freezer</li> <li>• Microwave Oven</li> <li>• Kettle</li> <li>• Toaster</li> <li>• Coffee maker</li> <li>• Dishwasher</li> <li>• Separate scullery</li> <li>• Bar Fridge</li> </ul>
Laundry Facilities:	<ul style="list-style-type: none"> <li>• Washing machine</li> <li>• Tumble drier</li> <li>• Ironing board and Iron</li> <li>• Clothes line</li> </ul>
Indoor:	<ul style="list-style-type: none"> <li>• Dining seating for 16+ guests</li> <li>• Breakfast counter seating</li> <li>• Fireplace</li> <li>• Bed Linen</li> <li>• Towels</li> </ul>
Media:	<ul style="list-style-type: none"> <li>• Numerous TV's with DStv (satellite channels)</li> <li>• Netflix</li> <li>• Dual viewing</li> <li>• Wi-Fi internet (uncapped)</li> </ul>
Outdoor:	<ul style="list-style-type: none"> <li>• Swimming pool</li> <li>• Sun loungers</li> <li>• Parasol</li> <li>• Outdoor seating</li> <li>• Outdoor dining</li> <li>• Beach Towels</li> <li>• BBQ Facilities (Wood-fire &amp; Gas braai)</li> </ul>
Children:	<ul style="list-style-type: none"> <li>• Tree house</li> </ul>
Safety remarks:	<ul style="list-style-type: none"> <li>• Not suitable for children under 6 years</li> <li>• Swimming pool with no pool safety feature</li> <li>• High drop-offs</li> <li>• Wide gaps in balustrades</li> </ul>
Parking:	<ul style="list-style-type: none"> <li>• Ample Off-street parking on property</li> </ul>
Security:	<ul style="list-style-type: none"> <li>• Fully enclosed property</li> <li>• Alarm, Beams, Connected to armed response</li> <li>• Two dogs live on the property and are part of the security (they are cared for by the staff)</li> </ul>
Other	<ul style="list-style-type: none"> <li>• Filtered Borehole water supply to the house</li> <li>• The house is designed with lots of natural light and is not ideal for guests that need blackout as there are no curtains</li> </ul>



# CVC CAPE VILLA COLLECTION



## Servicing

House Keeping:	<ul style="list-style-type: none"> <li>• The house is serviced by a live in housekeeper</li> <li>• Live out gardener</li> <li>• 7 hours a day during the week excluding public holidays</li> </ul>
----------------	--

## Reservations

Rates & Availability:	<ul style="list-style-type: none"> <li>• are subject to final confirmation</li> </ul>
Lease:	<ul style="list-style-type: none"> <li>• a standard rental agreement applies</li> </ul>
Booking Deposit:	<ul style="list-style-type: none"> <li>• a 50% deposit is required to confirm a booking</li> </ul>
Booking Fee:	<ul style="list-style-type: none"> <li>• applies – on booking confirmation invoice</li> </ul>
Breakage Deposit:	<ul style="list-style-type: none"> <li>• applies – due prior to arrival</li> </ul>