

CVC CAPE VILLA COLLECTION

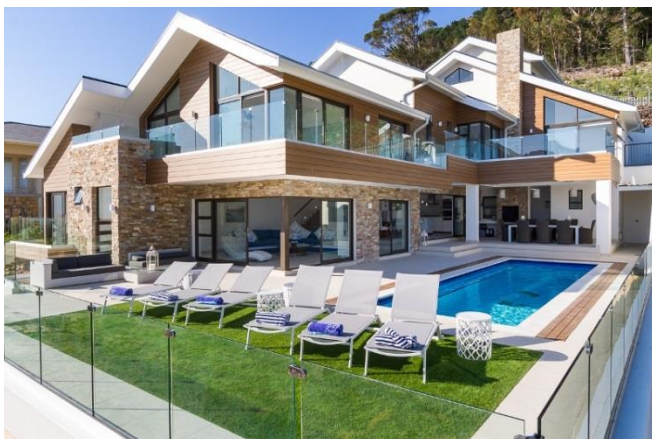
Atlantis – Berg-en-Dal Estate, Hout Bay, Cape Town

Sleeps	14	Pool	Private heated pool
Bedrooms	6	Views	Sea and Mountain
Bathrooms	6 + 1	Beach	± 5km

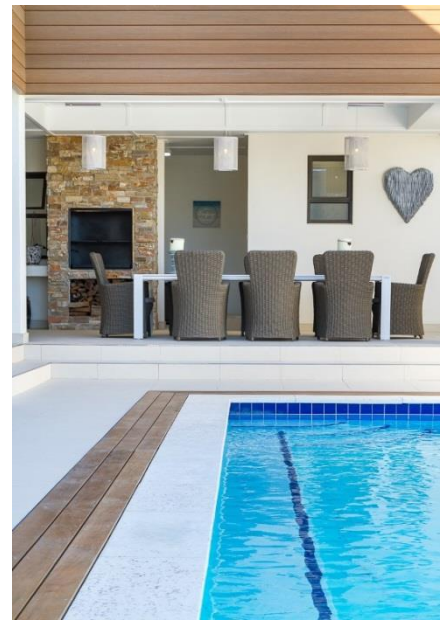


Summary

A stunning, contemporary, 6 bedroom home, with the most spectacular views of the entire bay. 'Atlantis' boasts a beautiful heated pool set within a sea facing patio. All in the safe confines of the an exclusive private Estate. 'Atlantis' is spacious and modern, and fully self-sustaining with full solar power and air conditioning in every room. State of the art furnishings adorn every space, and an amazing salt water aquarium, with its own Coral Reef, is the centre piece of the delightful open plan living space on the ground floor. The owner's incredible attention to detail is evident throughout this magical property. The villa sleeps 14, with 5 adult rooms, and a children's room which is a themed 'Ship's cabin,' with four bunk beds. The home cinema room with reclining chairs, professional surround sound and an HD 3D projector is the perfect spot for popcorn and movies. Every bedroom has a balcony and boasts feather-down pillows and Egyptian cotton bedding, and a 'full bay' sea view from your pillow. Wake up and be blown away every single day.



CVC CAPE VILLA COLLECTION



Living

This beautiful open plan home has ample space and all of the creature comforts one could ask for. Flooded with natural light, elegantly decorated and boasting spectacular views. The spacious open plan living area leads from the kitchen to the dining area and the lounge and has stacking doors which open up onto the pool deck, creating a wonderful indoor outdoor flow. There is a fabulous heated pool and stunning outdoor entertainment area with braai, separate toilet and shower. The feature dining table is beautifully crafted from the trunk of a large tree that was saved from the excavation of the building plot. The fully equipped kitchen with state of the art appliances is a chef's dream, with three ovens, 6 gas ring hob, microwave and a separate scullery. An oak wine cellar is a unique feature as well as the drinks fridge outside in the pool entertainment area.



CVC CAPE VILLA COLLECTION



CVC CAPE VILLA COLLECTION



Leisure

Relax beside the heated pool and soak in the magnificent views across the whole of Hout Bay. Enjoy al fresco dining under the African sky while sipping on a chilled Cape Chardonnay. It's a short drive to Hout bay beach for surf, sand and sun and to the Bay Harbour Market where you'll find a festive atmosphere, delicious food and unique crafts from Cape Town. For personal 'hot tips' on 'places to go', you will find recommendations in the house manual gathered over 15 years of enjoying Hout Bay and all it has to offer.



CVC CAPE VILLA COLLECTION



In the Media



CVC CAPE VILLA COLLECTION



THE RIGHT VIEW

Designed to have an Alpine lodge feel, this house makes a statement while being eco-friendly

"When I first met the owner, Chris Willet, we stood on his amazing plot and he asked me to show him what I'd built in the past," says architect Stephen Forster. From this viewpoint, with Hour Bay's Berg on Dal Estate laid out before them, Stephen was able to instantly point to six houses. When Chris remarked that they were all so different, Stephen explained that he designs what the clients want.

Stephen designed his first house in Hour Bay in 1994 and has since completed 100 properties there. Many of this Witvaterdam architect's clients have

remarked: "It's not what we expected, but it's everything we wanted."

For Chris, ex-Queen's Guard turned financial consultant, Hour Bay has been his preferred holiday destination for more than 16 years. Chris knew exactly what he wanted: a clean-lined contemporary house with no fuss and definitely no clutter. As a result, hinged doors were out, and instead all doors are sliding. Chris' involvement in the project extended to digging up the stump of an enormous gum tree, sandblasting it and using it as the base for a massive glass-topped dining table, and his ecologically friendly vision is evident throughout. He

AT A GLANCE

ARCHITECT Stephen Forster
DESIGNER Chris and Libby Willetland



THE CLIENTS On buying their dream plot with a sea view in Hour Bay, the couple wanted the ultimate Alpine lodge-inspired holiday home, which would maximise the views and include natural materials such as stone and timber.

THE HOUSE A double storey with six bedrooms, all en suite, a theatre living and dining area and an open-plan kitchen opening onto a huge wrap-around pool terrace. There's also a separate utility, laundry, wine cellar and a triple garage with two bedroom staff quarters.

LEFT: MARY WILLET/STEPHEN FORSTER; RIGHT: PHOTOGRAF/DAVID WILLET/STEPHEN FORSTER



ON THE WEB
GET THIS PLAN ONLINE
Visit gardenandhome.co.za and click on Architect's Plans to download the plan.



used all the stone from the excavation to landscape the garden, and the worktops and wall tiles throughout were made from cement mixed with reclaimed glass by Matt Wilkinson of Stonewave.

The massive glass chandelier depicting a dolphin, by artist and designer Stephen Pikus, over the stairwell was made from recycled glass bottles. The house has LED lighting throughout, solar water heating and rainwater is stored in a 15 000l tank under the deck.

With stone and wood cladding, the exterior resembles an Alpine lodge and mirrors the peak of the mountain behind. "Chris and I worked on and tweaked this design for over two years to ensure every angle of every wall was absolutely right. It's better to take a bit more time in the planning so that when you start building there are few changes!"

SOURCES Stephen Forster for architect.co.za; Stephen Pikus for stephenpikus.com; Stonewave for stonewave.co.za

INSPIRATIONS



Towel off after a refreshing swim with this Miami blue and white beach towel, R319 from Ghomex.



Use wicker trays like this one, R199 from Ghomex, to hold fruit and snacks.



Include a weatherproof stool to rest drinks. This egg blue garden stool, R 215, NextDecor.

Make sun the drink stay cool with a cooler bag, R229 from H&M.



Add summer vibes with scatter cushions. Pineapple scatter cushion cover and palm leaf scatter, R149 each, H&M.

HELLO sunshine

Make every day a holiday by setting up your very own place in the sun. All you need is a comfortable lounger, a delicious cocktail and a good book



Ideal for landscaping and softening gardens, DuraTurf Country Club artificial grass is approximately R220-R370/m² (depending on installation) in 100% recycled and colourfast.



Keep hydrated with a tropical sippy cup, R399 from M Price Home.



Protect your face from the glare with a chic sun hat. Glam wide brimmed hat, R220, Woodworks.



A comfortable weatherproof lounge is essential for relaxing. Kodalum aluminium lounge, R2 200, Mela.

ON THE AFRICAN HOME

The loungers are from Patio Warehouse, the Karoo side tables on the right are available from True Design, the rattan tray is from L'Orangerie and the pineapple cushions are from Block & Chisel. Photographed on the patio of Atlantis Hour Bay in Cape Town, which is available to rent through the Cape Villa Collection.

EXPERT TIPS

As it's cool and moist, non-slip and needs every bit of maintenance, artificial grass is proving to be a really popular floor for outdoor living areas. Helen de Witter, marketing manager for Belgarda Floors, has the following tips if using it near a swimming pool:

- There are two types of artificial grass: infill, which requires silica sand to lift the blades and non-infill where cutted blades hold up the other blades. When installing artificial grass around a pool, opt for non-infill products as wet feet will pick up the sand and fill end up in the pool.
- Chlorine and pool chemicals can be spilt on pool surrounds. If this happens on artificial turf, brush off the excess and hose off the rest.
- However, if chlorinated water splashes onto the surface, we found that DuraTurf Country Club copes well. Its natural look, lush feel and affordability make it a good choice for pool areas.

SOURCES | @helenhomer | Belgarda Floors | Belgarda Floors | Block & Chisel | Mela | NextDecor | Cape Villa Collection | DuraTurf | ghomex.com | DuraTurf | ghomex.com | H&M | hnm.com | L'Orangerie | lorangeerie.com | Mela | melapark.co.za | M Price Home | mpricehome.com | NextDecor | nextdecor.co.za | Patio Warehouse | patiowarehouse.com | True Design | true-design.co.za | Woodworks | woodworks.co.za

Bedrooms & Bathrooms

Bedroom 1	King size bed with en-suite bathroom. Dressing room, Safe and Air-conditioning. HD TV & DSTV. Sliding doors to the balcony. Sea and harbour views. Upstairs.
Bedroom 2	Two bunk beds (sleeps 4) with en-suite bathroom. Air-conditioning. Sliding doors to balcony. Sea views. Upstairs.
Bedroom 3	King size bed with en-suite bathroom. Air-conditioning. Sliding doors to balcony. Sea views. Upstairs.
Bedroom 4	King size bed with en-suite bathroom. Air-conditioning. Sliding doors to balcony. Sea views. Upstairs.
Bedroom 5	Queen size bed with en-suite bathroom. Air-conditioning. Sliding doors to balcony. Sea views. Downstairs.
Bedroom 6	King size bed with en-suite bathroom. Downstairs.
Bathroom 1	En-suite to bedroom 1 with oval bath, shower, double vanity and toilet. Heated towel rail.
Bathroom 2	En-suite to bedroom 2 with shower, basin and toilet. Heated towel rail.
Bathroom 3	En-suite to bedroom 3 with shower, basin and toilet. Heated towel rail.
Bathroom 4	En-suite to bedroom 4 with shower, basin and toilet. Heated towel rail.
Bathroom 5	En-suite to bedroom 5 with bath, shower, basin and toilet. Heated towel rail.
Bathroom 6	En-suite to bedroom 6 with bath, shower, basin and toilet.
Pool Shower Room	Shower room at the outdoor entertainment area with shower and separate toilet.
Other	Guest toilet.



CVC CAPE VILLA COLLECTION



CVC CAPE VILLA COLLECTION



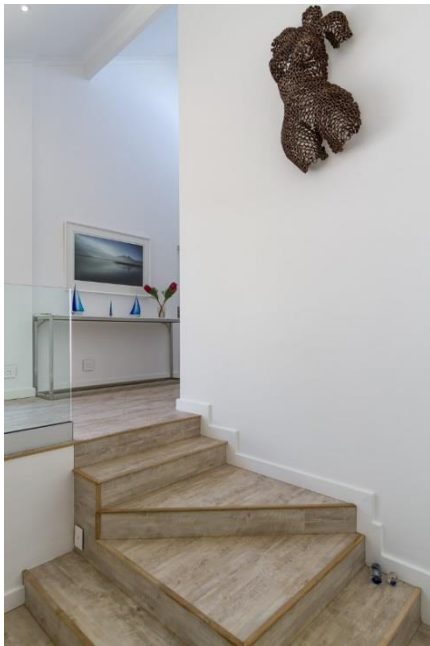


Features and Facilities

<p>Kitchen/Catering:</p>	<ul style="list-style-type: none"> • 6 Plate Gas hob • 3 electric ovens • Fridge-Freezer • Microwave Oven • Plate warmer • Smeg Kettle • Smeg Toaster • Smeg Blender • Salad prep bowl • Coffee maker • Dishwasher • Separate scullery • Wine fridge
<p>Laundry Facilities:</p>	<ul style="list-style-type: none"> • Washing machine • Tumble drier • Ironing board and Iron • Clothes line
<p>Indoor:</p>	<ul style="list-style-type: none"> • Dining table • Breakfast bar counter • Air-con in every room • Solar-powered • Heaters • Fans • Bed Linen • Towels
<p>Media:</p>	<ul style="list-style-type: none"> • Cinema room • HD TV with DSTv (satellite channels) • Dual viewing • Music system (surround sound) • Wi-Fi internet (Hi-speed / uncapped / boosters in each room)
<p>Outdoor:</p>	<ul style="list-style-type: none"> • Heated swimming pool • Sun loungers • Outdoor seating • Outdoor dining • Beach Towels

CVC CAPE VILLA COLLECTION

	<ul style="list-style-type: none"> • BBQ Facilities (Wood-fire) • Bar fridge
Safety remarks:	<ul style="list-style-type: none"> • Pool safety cover for toddler protection • High drop-offs
Parking:	<ul style="list-style-type: none"> • Triple Garage Available for 3 cars • Off-street parking behind automated gate
Security:	<ul style="list-style-type: none"> • Fully enclosed property • Located within security estate
Other	<ul style="list-style-type: none"> • Housekeeper lives on the property



Servicing

House Keeping:	<ul style="list-style-type: none"> • The house is serviced daily on week days • excludes weekends and public holidays • additional servicing at additional cost (by prior arrangement) • excludes personal laundry • linen change once per week
Pool Service:	<ul style="list-style-type: none"> • Once per week
Garden Service:	<ul style="list-style-type: none"> • Once per week

CVC CAPE VILLA COLLECTION



Reservations

Rates & Availability:	<ul style="list-style-type: none">• are subject to final confirmation
Lease:	<ul style="list-style-type: none">• a standard rental agreement applies
Booking Deposit:	<ul style="list-style-type: none">• a 50% deposit is required to confirm a booking
Booking Fee:	<ul style="list-style-type: none">• applies – on booking confirmation invoice
Breakage Deposit:	<ul style="list-style-type: none">• applies – due prior to arrival

GPS Co-ordinates

34° 2'12.82"S
18°21'42.28"E

