

South Lake – Lake Michelle, Noordhoek, Cape Town

Sleeps	6	Pool	Private plunge pool
Bedrooms	3	Views	Mountain views
Bathrooms	3	Beach	± 5 km



Summary

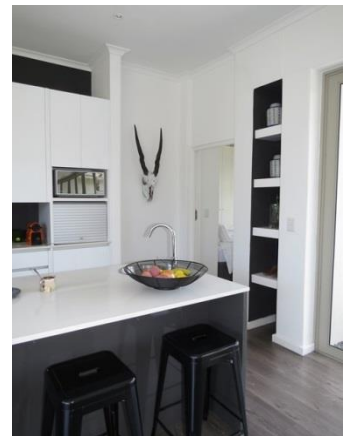
South Lake is a charming modern open-plan family home with a pool situated within Lake Michelle Security Estate; a peaceful location where the children play in the streets and the mountains light up at sunset. Just a 5 minute drive to Noordhoek Farm Village, Chapmans Peak and the white sands and turquoise waters of the beautiful Noordhoek Beach.



Living

Large open plan living area with concertina doors that open up creating an inside-outside living space which flows through the entire house. Beautifully decorated in a black and white palette. The floor to ceiling windows create a bright and airy atmosphere allowing natural light to flood in. Two separate lounges are both equipped with TV's that offer DStv.

CVC CAPE VILLA COLLECTION





Leisure

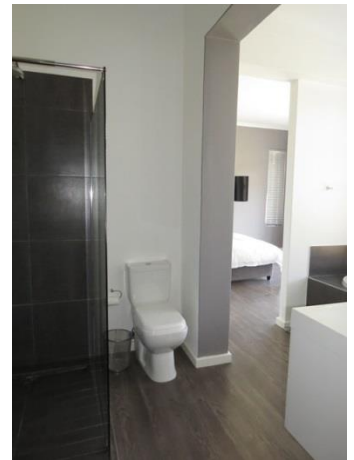
Enjoy a dip in the plunge pool after a day at the beach. The outside patio with gas braai is a perfect setting for al fresco dining. There is an array of activities on your doorstep; take a walk within the estate along Lake Michelle and enjoy the abundant bird life, take a short drive up Chapman's peak for sundowners, go surfing at one of our unspoilt beaches or hike in our magnificent Silvermine Nature Reserve – the possibilities are endless.



Bedrooms & Bathrooms

Bedroom 1	King size bed, dressing room, doors to outside. En-suite bathroom.
Bedroom 2	Queen size bed, dressing room, doors to outside. TV. En-suite bathroom.
Bedroom 3	Queen size bed, dressing room, doors to outside. En-suite bathroom.
Bathroom 1	En-suite to bedroom 1 with bath, shower, basin, and toilet.
Bathroom 2	En-suite to bedroom 2 with shower, basin, and toilet.
Bathroom 3	En-suite to bedroom 3 with shower, basin, and toilet.
Other	Guest toilet.

CVC CAPE VILLA COLLECTION



Features and Facilities

Kitchen/Catering:	<ul style="list-style-type: none"> • Gas hob-electric oven • Fridge-Freezer • Microwave Oven • Kettle • Toaster • Coffee maker • Dishwasher • Separate scullery
Laundry Facilities:	<ul style="list-style-type: none"> • Washing machine • Tumble drier • Ironing board and Iron • Clothes line
Indoor:	<ul style="list-style-type: none"> • Dining seating for 8 guests • Breakfast counter seating • Heaters • Fans • Fireplace • Bed Linen • Towels
Media:	<ul style="list-style-type: none"> • TV with DStv (satellite channels) • Wi-Fi internet
Outdoor:	<ul style="list-style-type: none"> • Swimming pool • Outdoor seating • Beach Towels • BBQ Facilities (Weber)
Safety remarks:	<ul style="list-style-type: none"> • Swimming pool with no pool safety feature
Parking:	<ul style="list-style-type: none"> • Garage Available for 1 car • Parking behind automated gate • Secure on-street parking
Security:	<ul style="list-style-type: none"> • Located within Lake Michelle security estate with regular patrols.
Other	<ul style="list-style-type: none"> • Wheelchair Friendly

Servicing

House Keeping:	<ul style="list-style-type: none"> • 2 times per week • excludes weekends and public holidays • additional servicing at additional cost (by prior arrangement) • excludes personal laundry • linen change once per week
Pool Service:	<ul style="list-style-type: none"> • 1 times per 2 weeks
Garden Service:	<ul style="list-style-type: none"> • 1 times per 2 weeks

Reservations

Rates & Availability:	<ul style="list-style-type: none"> • are subject to final confirmation
Lease:	<ul style="list-style-type: none"> • a standard rental agreement applies
Booking Deposit:	<ul style="list-style-type: none"> • a 50% deposit is required to confirm a booking
Booking Fee:	<ul style="list-style-type: none"> • applies – on booking confirmation invoice
Breakage Deposit:	<ul style="list-style-type: none"> • applies – due prior to arrival

CVC CAPE VILLA COLLECTION



GPS Co-ordinates

34° 7'25.90"S
18°22'29.07"E

