

CVC CAPE VILLA COLLECTION

Le Vue d'Alexandre – Noordhoek, Cape Town

Sleeps	8	Pool	Private Pool
Bedrooms	4	Views	Mountain
Bathrooms	4	Beach	± 2km



Summary

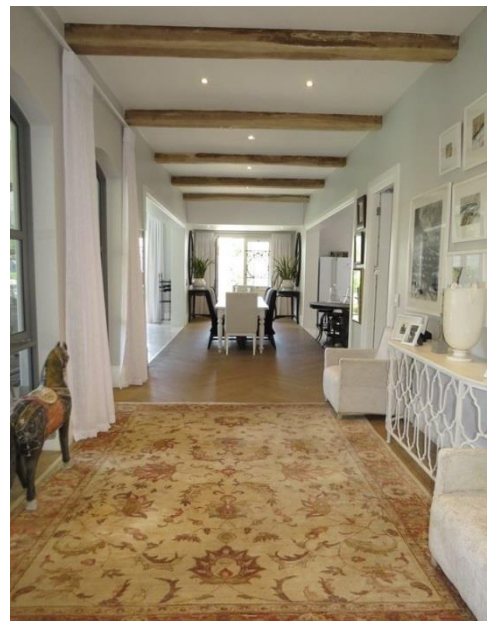
Le Vue d' Alexandre is a magnificent family home set in the beach area of Noordhoek with splendid mountain views, a beautiful big pool and a short distance from the beach. Quality, luxury and sophistication are the order of the day at this delightful retreat.



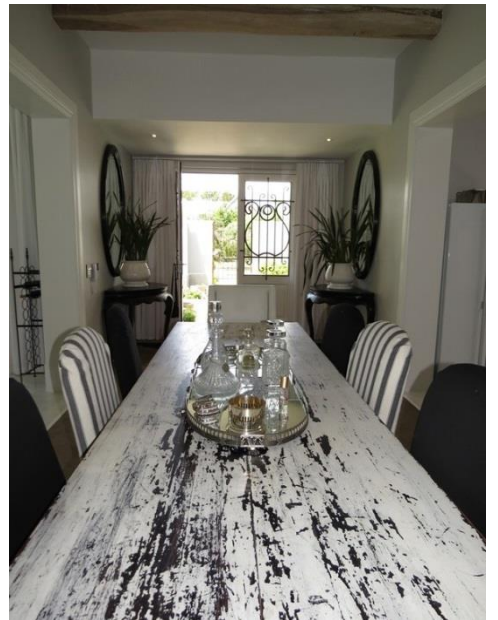
CVC CAPE VILLA COLLECTION

Living

Impeccable attention to detail in every space, inside and out. From the moment you enter the front door your senses will be delighted by the textures, colours, fabrics, fittings, furniture and special personal touches. The large living areas and gourmet kitchen make this a perfect home for a holiday. The bedrooms are large and comfortable, all with en suite bathrooms, and all open on to the landscaped exterior.



CVC CAPE VILLA COLLECTION

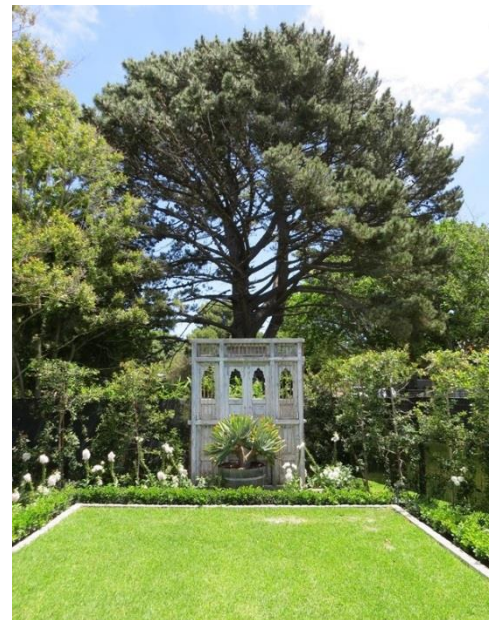


CVC CAPE VILLA COLLECTION



Leisure

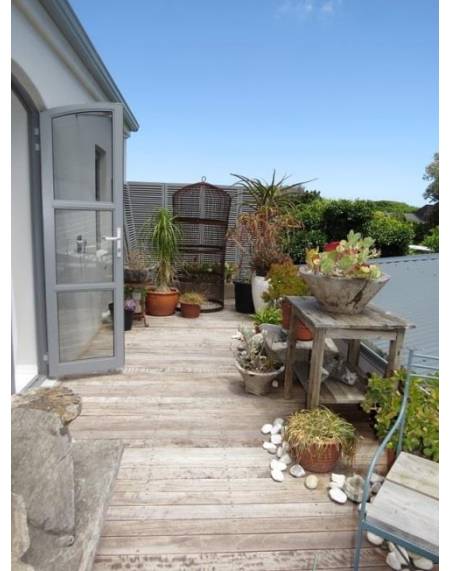
The pool, fire pit, mountain views and undercover, spacious and luxurious patio all make for the perfect holiday home. The large landscaped garden is a real feature of this outstanding property.



CVC CAPE VILLA COLLECTION



CVC CAPE VILLA COLLECTION





Bedrooms & Bathrooms

Bedroom 1	King size (extra length) bed with en-suite bathroom. Mountain Views.
Bedroom 2	Self-contained flatlet with mountain views, entrance through the house or private entrance. Queen size bed with en-suite bathroom. Kitchenette and a private balcony.
Bedroom 3	Queen size four-poster bed with en-suite bathroom. Doors leading to back patio and garden.
Bedroom 4	Bunk beds (2 x single) with en-suite bathroom. Doors leading to back patio and garden.
Bathroom 1	En-suite to bedroom 1 with bath, shower, basin and toilet. Outside shower.
Bathroom 2	En-suite to cottage with bath, shower, basin and toilet.
Bathroom 3	En-suite to bedroom 3 with shower, basin and toilet.
Bathroom 4	En-suite to bedroom 4 with shower, basin and toilet.
Other	Guest toilet.

CVC CAPE VILLA COLLECTION



CVC CAPE VILLA COLLECTION



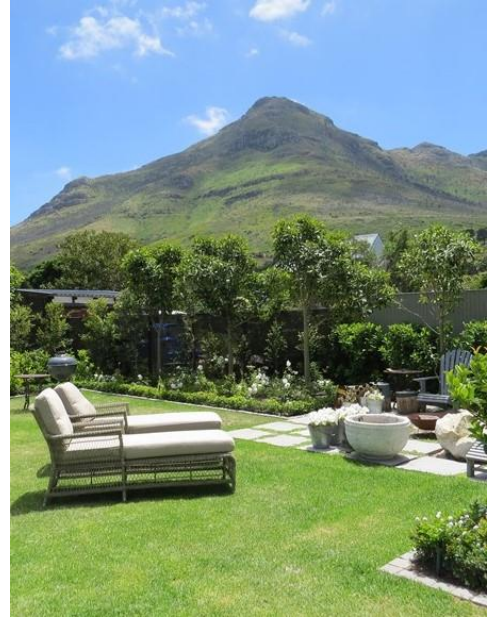
Flatlet



Features and Facilities

Kitchen/Catering:	<ul style="list-style-type: none"> • Gas hob-electric oven • Fridge-Freezer • Microwave Oven • Kettle • Toaster • Coffee maker • Water cooler • Dishwasher • Separate scullery • Bar Fridge
Laundry Facilities:	<ul style="list-style-type: none"> • Washing machine • Tumble drier • Ironing board and Iron • Clothes line
Indoor:	<ul style="list-style-type: none"> • Dining seating for 8 guests • Breakfast counter seating 3 • Heaters • Bed Linen • Towels
Media:	<ul style="list-style-type: none"> • TV with DStv (satellite channels) • Wi-Fi internet (capped)
Outdoor:	<ul style="list-style-type: none"> • Swimming pool • Sun loungers • Outdoor seating • Outdoor dining • Beach Towels • BBQ Facilities (Wood-fire / Fire Pit)
Children:	<ul style="list-style-type: none"> • Children's park in the cul-de-sac
Safety remarks:	<ul style="list-style-type: none"> • Swimming pool with no pool safety feature
Parking:	<ul style="list-style-type: none"> • Off-street parking
Security:	<ul style="list-style-type: none"> • Fully enclosed property • Alarmed

CVC CAPE VILLA COLLECTION



CVC CAPE VILLA COLLECTION

Servicing

House Keeping:	<ul style="list-style-type: none"> • 2 times per week • excludes weekends and public holidays • additional servicing at additional cost (by prior arrangement) • excludes personal laundry • linen change once per week
Pool Service:	<ul style="list-style-type: none"> • 1 times per week
Garden Service:	<ul style="list-style-type: none"> • 1 times per week

Reservations

Rates & Availability:	<ul style="list-style-type: none"> • are subject to final confirmation
Lease:	<ul style="list-style-type: none"> • a standard rental agreement applies
Booking Deposit:	<ul style="list-style-type: none"> • a 50% deposit is required to confirm a booking
Booking Fee:	<ul style="list-style-type: none"> • applies - on booking confirmation invoice
Breakage Deposit:	<ul style="list-style-type: none"> • applies - due prior to arrival

GPS Co-ordinates

34° 6'5.47"S

18°22'0.46"E

