

Mountain Place – Kommetjie, Cape Town

Sleeps	8	Pool	Private pool
Bedrooms	4	Views	Sea and mountain
Bathrooms	4	Beach	± 2km



Summary

An elegant double storey home with beautiful views across the bay to Chapman's Peak. It has a private swimming pool and is only 10 minutes' walk from the soft white sands of Longbeach. Tastefully decorated and fully equipped. Sleeps 8.



Living

The upstairs open plan living area, with floor to ceiling glass sliding doors, takes full advantage of the magnificent views and natural light flooding in. Comfortably furnished and fully equipped. The open plan kitchen is a chef's delight.

CVC CAPE VILLA COLLECTION



CVC CAPE VILLA COLLECTION

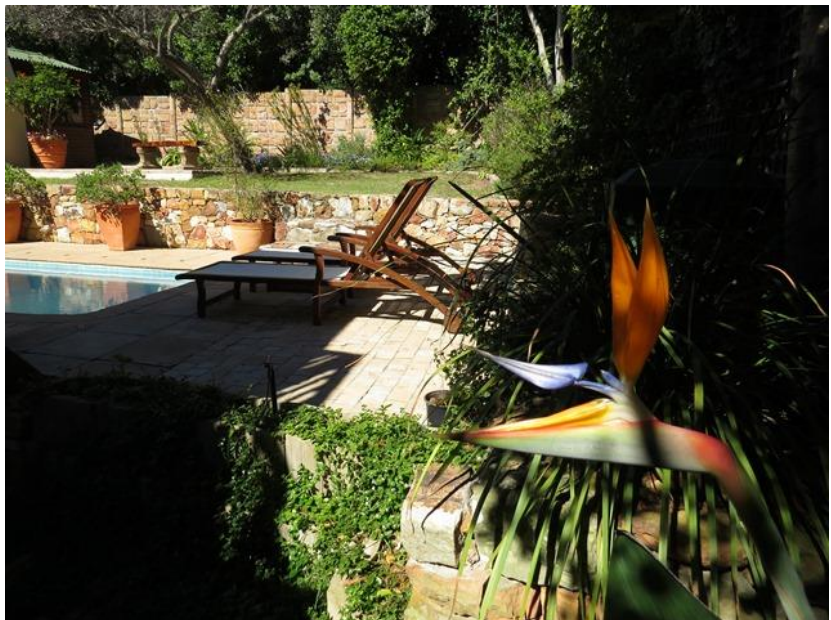


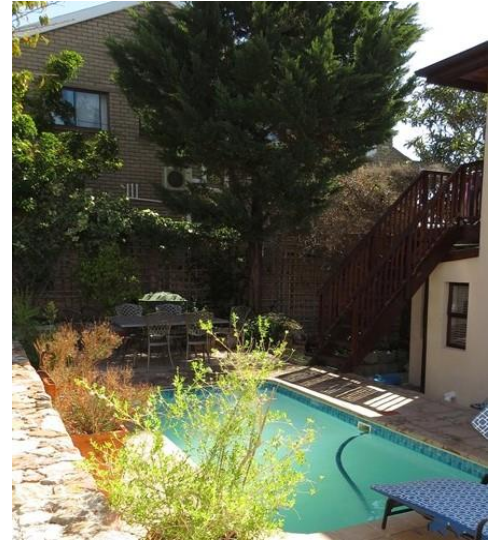
Leisure

The front deck overlooks magnificent sea and mountain views - perfect for your morning coffee or a spectacular sunset. The swimming pool is perfectly tucked away from the summer winds of the Cape. Enjoy a walk on the mountain paths or down to the beach. There is something for everyone

CVC CAPE VILLA COLLECTION

in the charming village of Kommetjie, coffee shops, deli, pubs, restaurants, pizza, surf shop, kite shop, hairdresser and more. A perfect place for a holiday.





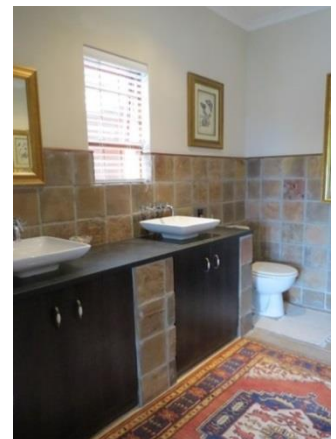
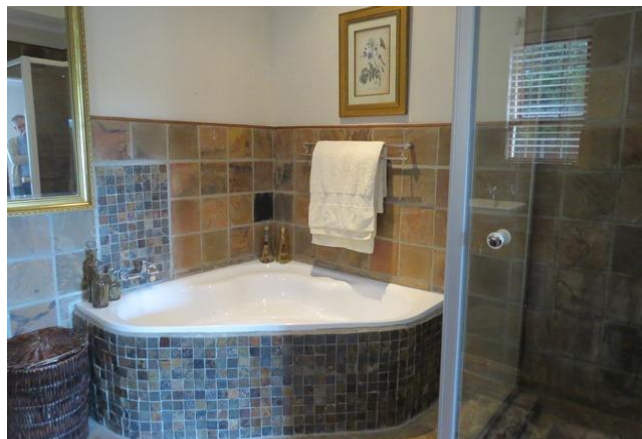
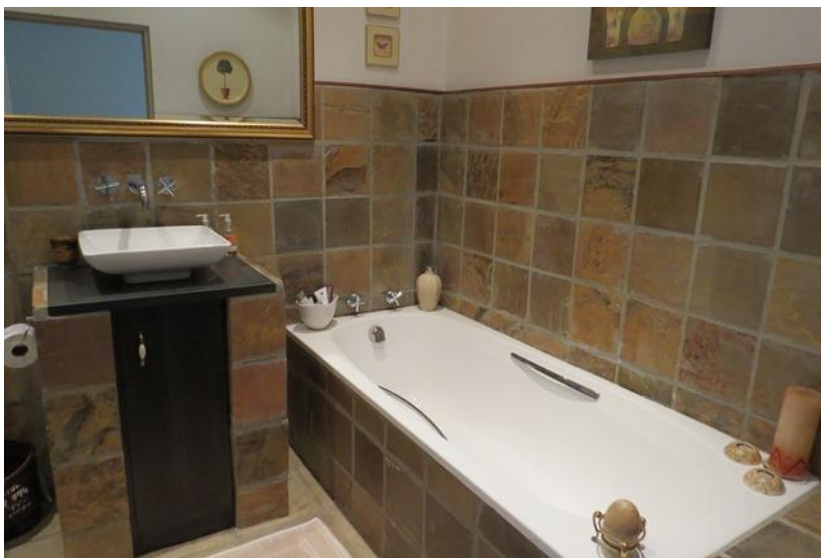
Bedrooms & Bathrooms

Bedroom 1	Queen sized bed with en-suite bathroom and doors leading to the downstairs balcony.
Bedroom 2	Queen size bed with en-suite bathroom. Doors leading to pool area.
Bedroom 3	Queen size bed with doors leading to pool area.
Bedroom 4	Separate flatlet with own entrance. Queen bed with en-suite bathroom, kitchenette and lounge area. Doors leading to pool area.
Bathroom 1	En-suite to bedroom 1 with corner bath, shower, double vanity and toilet.
Bathroom 2	En-suite to bedroom 2 with shower, basin and toilet.
Bathroom 3	Family bathroom with bath, shower, basin and toilet.
Bathroom 4	En-suite to bedroom 4 with shower, basin and toilet.
Other	Guest toilet (upstairs).

CVC CAPE VILLA COLLECTION



CVC CAPE VILLA COLLECTION



Separate flat-let

The garden flat is a lovely private space with an en-suite bedroom and its own seating area and

CVC CAPE VILLA COLLECTION

kitchenette. It leads to the back garden and pool and is ideal for a couple or older children.



Features and Facilities

Kitchen/Catering:	<ul style="list-style-type: none">• Gas hob-electric oven• Fridge-Freezer• Microwave Oven• Kettle
-------------------	--

CVC CAPE VILLA COLLECTION

	<ul style="list-style-type: none"> • Toaster • Coffee maker • Dishwasher • Separate scullery
Laundry Facilities:	<ul style="list-style-type: none"> • Washing machine • Tumble drier • Ironing board and Iron • Clothes line
Indoor:	<ul style="list-style-type: none"> • Dining seating for 8 guests • Fans • Fireplace • Bed Linen • Towels
Media:	<ul style="list-style-type: none"> • TV with DStv (satellite channels) • Music system • ADSL internet (capped)
Outdoor:	<ul style="list-style-type: none"> • Swimming pool • Sun loungers • Outdoor seating • Outdoor dining • Beach Towels • BBQ Facilities (Gas braai)
Children:	<ul style="list-style-type: none"> • Not suitable for children under 5 years old
Safety remarks:	<ul style="list-style-type: none"> • Swimming pool safety net available on special request by prior arrangement
Parking:	<ul style="list-style-type: none"> • Off-street parking behind automated gate
Security:	<ul style="list-style-type: none"> • Fully enclosed property • Alarm • Beams



Servicing

House Keeping:	<ul style="list-style-type: none"> • Once per week • excludes weekends and public holidays • additional servicing at additional cost (by prior arrangement) • excludes personal laundry • linen change once per week
Pool Service:	<ul style="list-style-type: none"> • 1 times per week

CVC CAPE VILLA COLLECTION

Garden Service:	<ul style="list-style-type: none"> 1 times per week
-----------------	--

Reservations

Rates & Availability:	<ul style="list-style-type: none"> are subject to final confirmation
Lease:	<ul style="list-style-type: none"> a standard rental agreement applies
Booking Deposit:	<ul style="list-style-type: none"> a 50% deposit is required to confirm a booking
Booking Fee:	<ul style="list-style-type: none"> applies – on booking confirmation invoice
Breakage Deposit:	<ul style="list-style-type: none"> applies – due prior to arrival



GPS Co-ordinates

34° 8'35.08"S
18°20'1.17"E

