

Mountain Paradise – Hout Bay, Cape Town

Sleeps	7	Pool	Private
Bedrooms	4	Pool size	± 7x4 meters
Bathrooms	2	Views	Mountain and Valley
House Size	± 275m ²	Beach	5 km
Erf Size	± 3800m ²	Rating	3 star equivalent



Summary

Awe inspiring views of Hout Bay's Orange Kloof greet as you arrive at the gate of this much loved family home set against the mountain in a very large indigenous garden. The house enjoys maximum daylight hours and the tiled floors inside provide cool relief on a hot summers day. A children's paradise, this home is a perfect holiday destination for a family.





Living

Stunning panoramic views from the open plan and elevated living room and dining room offer a sense of peace and the relaxed decor creates a charming environment. Doors leading from the lounge to a balcony on either side with outdoor furniture for el fresco entertainment. Fireplace for cool evenings. Comfortable open plan kitchen / family room and dining area with TV. Fully equipped kitchen.



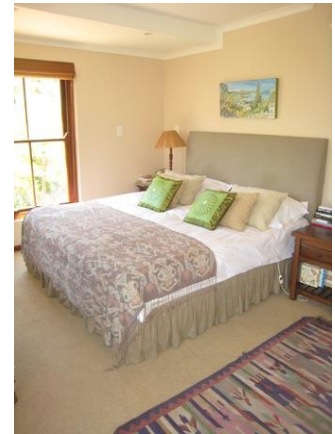
Leisure

The large enclosed fynbos garden with open lawn, swings, trampoline and pool with safety fence, make this home ideal for family holidays. Plenty of activity for children and peaceful places for parents to read a book or simply enjoy the awesome view. Close to Constantia's world renowned wine route and a short drive to Hout Bay beach, the location is superb.



Bedrooms & bathrooms

Bed 1	Kind size bed. Mountain views. Double doors leading onto balcony. En-suite bathroom.
Bed 2	Double bed. Mountain views. Doors leading onto balcony.
Bed 3	Children's bedroom with 2 single beds.
Bed 4	Double bed.
Bath 1	En-suite bathroom with Victorian bath with hand shower, shower, basin and toilet.
Bath 2	Family bathroom with bath, shower, basin and toilet.
Bath 3	Guest toilet.

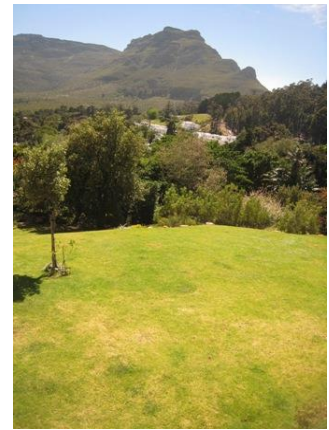


Rate indication

From R3,500 – R4,500 per night for the villa.
Rates are subject to availability and owner confirmation.
Rates depend on duration of stay and number of guests.

Reservations

A once-off administration fee of R250 per booking applies.
A standard lease agreement applies.
A 50% deposit required to confirm.



Cleaning service

Weekdays	Cleaning service 3 times per week inclusive in the rates
Laundry	Personal laundry is not included
Public holidays/weekends	Service available on request at additional cost
Extra cleaning	Available on request at additional costs
Pool and Garden	Serviced weekly



Additional Info

Breakage deposit	R3,500 payable in cash on arrival.
Parking	Single garage and ample parking on property within automated gate.
Meals	No meals included. Self-catering only.
Security	Perimeter and indoor beams. Linked to 24 hour security service.
Facilities	Fenced pool area – Parasol for pool - Barbeque facilities (weber and skottel braai) – Flat-screen TV – DSTV (satellite channels) - DVD – ADSL wireless internet access - Fireplace – Fully equipped kitchen – Stove – Oven – Microwave – Dishwasher - Washing machine - Tumble drier – Bed linen and towels provided.
Remarks	Wally the 'very big' tortoise has run of the garden. He is a sociable fellow and will bring you many laughs.



Google co-ordinates

34° 00'57.41"S

18° 23' 21.85" E

Hout Bay Area Information



Hout Bay is one of the most beautiful and popular places on the Cape Peninsula and a highlight of any visit to Cape Town, just 20 minutes drive to Cape Town city centre and 10 minutes from the Constantia's Wine Route.

The beautiful long beach, fine seafood restaurants and numerous art galleries provide something for everyone. Hout Bay has character and charm with a wonderful balance between the old and new, with a rich history and a modern pace.

Set at the foot of the famous Chapman's Peak mountain, this village has its own working harbour that is the home of the tuna, snoek and crayfish fleets. Choose your own 'catch of the day' from the fish market or take a boat trip to Seal Island.



The Beach and Sea Sports

The bay is a great sailing venue, and is also ideal at most times for water sports of all kinds. The attractions of this beautifully situated place are numerous. Boat cruises leave Hout Bay Harbour for Duiker Island to get up close and personal with the Cape Fur Seals.

The predominant offshore fish species are yellow fin tuna, longfin, mako and occasionally Dorado. Inshore there is yellowtail and cape snoek with options for hooking cape salmon and Cob. Book a fishing trip with one of the experts and fish off the Atlantic coastline, Cape Point or in False Bay.

Experience jet skiing and high speed boat trips in Hout Bay as well as spectacular daily cruises from Hout Bay Other than hiking, sailing, surfing, kayaking, fishing, cycling, having a picnic or sun tanning at the beach, there is not much one can't do in Hout Bay. And the scenic Chapman's Peak Drive, the harbour, the bird park and Seal Island are all part of it.



Scenery drives and hikes

Vantage points from Chapman's Peak drive offer spectacular land based whale watching in season. The access road that runs from Camps Bay, offers a beautiful drive all along the sea. The town lies picturesquely in a wind-protected bay, surrounded in the west by the Karbonkel Mountain, the famous Mount Sentinel as the outpost in the sea and in the east, by the Constantia Mountains and Chapman's Peak. Chapman's Peak Drive (if open) is one of the most scenic cliff drives in the world, curving along the rocks at the side of the mountain with an impressive (visible) engineering structure and spectacular views not to be missed. There are many hikes in and around Hout Bay. The natural ones to choose would be from Chapman's Peak. If you like forest walks, the Constantia Nek walk is beautiful and they have an easy circular walk to enjoy the forest.



Mariners Wharf and Hout Bay Harbour

Mariner's Wharf meets the ocean at the end of Hout Bay beach. Built on a pier this harbour front emporium brings to shore a seafood bistro, a maritime themed restaurant, fresh fish and live crayfish (lobster) markets; as well as nautical curio and gift shops. Stroll Mariner's Wharf and visit the working harbour and eat at one of many seafood restaurants overlooking the ocean. The Hout Bay Harbour is a hive of activity as the fishing boats, yachts and charter boats leave and enter the harbour all day. A craft market on the water's edge, the Kraal Kraft curio shop, restaurants and the seagulls provide further entertainment for visitors and locals alike.

The charismatic fishing village of Hout Bay floats basins filled with small authentic working fishing vessels that supply a fresh catch daily. The views from Mariner's Wharf across the beach, along notable Chapman's Peak Drive, over the water and back across to the encircling mountains is applauded by seals visiting from nearby Seal Island.



The Fisherman's Wharf Market built out of a 1940's wooden trawler sells local and imported seafood. Watch your fresh fish get soled and filleted, treat yourself to fresh sushi or old style smoked fish delicacies from the in-house smoker. The Locker built in the hull sells wine, beer and liquors. The Shipwreck Shop retails maritime memorabilia, Mariner's Chest sells clothing, curios and shells as sea souvenirs while Pearls in the Oyster pearl factory part with pearl bearing oysters with the option of setting them as jewellery for you.



The World of Birds

The World of Birds is the largest bird park in Africa and one of the few large bird parks in the World. Over 3 000 birds (and small animals) of 400 different species are uniquely presented in more than 100 spacious landscaped walk through aviaries, allowing you the most intimate closeness with nature. A paradise for nature lovers and photographers.

Take a stroll through the Monkey Jungle and make friends with the inquisitive little Squirrel Monkeys. A tropical garden setting in the Hout Bay Valley is the environment in which the aviaries are spaced over 4 ha of land, framed by the back of Table Mountain, the Twelve Apostles, Constantiaberg, Chapman's Peak and Little Lion's Head.



Township Tour

Take a township tour of Imizamo Yethu, led by a local, for another view on life. Experience the life in an 'Informal Settlement' or 'township' yourself. You will encounter people who couldn't be friendlier or more welcoming, despite their poverty, lack of education and prospects.



Sunday Craft Market

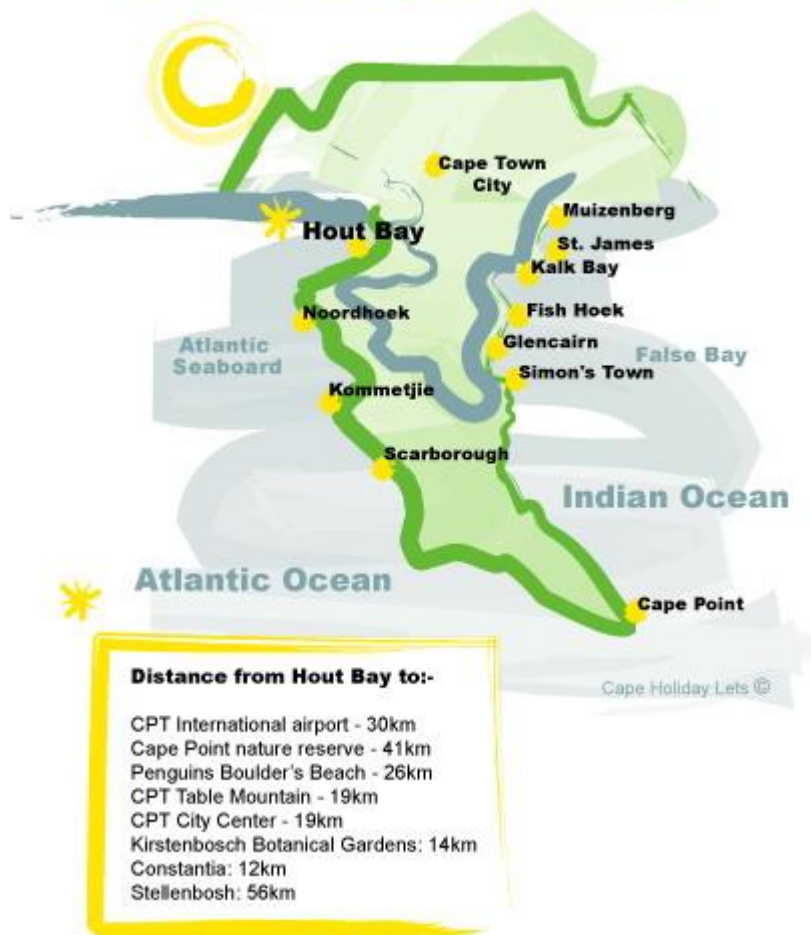
The craft market in the middle of Hout Bay centre takes place every Sunday. It is definitely one of the best markets in the Cape. The stalls are only allowed to display handmade crafts and are often of good quality. You will find anything here and for the kids there is usually a jumping castle and pony rides.

Llandudno beach

A few minutes drive is the spectacular beach of Llandudno, which has become very trendy, due to its sheltered position, stunning setting with boulders and azure blue Ocean.



HOUT BAY & SURROUNDS



Distances to other attractions:
Constantia Wine Route (10km)
Kirstenbosch Botanical Gardens (15km)
Camps Bay (15km)
Llandudno beach (5km)
V&A Waterfront (25km)
Table Mountain Cable Car (20km)