

### Strawberry Lane - Constantia, Cape Town

Sleeps	8	Pool	Private pool
Bedrooms	4	Pool size	± 8m x 4m
Bathrooms	4	Views	Mountain
House size	± 300m <sup>2</sup>	Beach	± 9 km



#### Summary

Splendid private villa set in an upmarket security estate in Constantia. Strawberry Lane is a spacious and modern family home offering a quiet and relaxed retreat in stylish comfort. Ideal for families, it features a level garden with large swimming pool and is a few minutes' drive to all of Constantia's fabulous attractions.





### Living

Designer décor and quality finishes create a luxury atmosphere throughout this beautiful home. Gourmet kitchen with modern appliances and breakfast counter. Light and spacious open plan living, dining and kitchen area opens onto the large covered veranda and pool area via floor to ceiling glass doors.



 *Cape*  
VILLA COLLECTION





### **Leisure**

Sun-loungers beside the pool, comfortable outdoor seating, gas heater and dining table with large barbeque complete the picture for relaxing days and evenings of entertainment with al fresco dining. Constantia offers a multitude of world renowned wine-farms and fine-dining restaurants to choose from.



 *Cape*  
VILLA COLLECTION







### Bedrooms & Bathrooms

Bedroom 1	Master bedroom: King-size bed, doors leading to garden, sofa, dressing room, en-suite bathroom.
Bedroom 2	King-size bed, en-suite bathroom.
Bedroom 3	King-size bed, loft, doors leading to garden.
Bedroom 4	Twin beds, doors leading to garden.
Bathroom 1	En-suite to master bedroom, modern fittings, large bath, large shower, double basin, toilet, outside shower.
Bathroom 2	En-suite to bedroom 2, shower, basin, toilet.
Bathroom 3	Family bathroom services bedroom 3 and 4, large bathroom with double size shower, bath, double basin.
Bathroom 4	Separate bathroom, with shower, basin, toilet.



 *Cape*  
VILLA COLLECTION





 *Cape*  
VILLA COLLECTION







### Features and Facilities

**Kitchen/Catering:** Gas hob-electric oven / Fridge-Freezer / Microwave Oven / Kettle / Toaster / Coffee maker / Dishwasher / Separate scullery

**Laundry Facilities:** Washing machine / Tumble drier / Clothes line / Ironing board and Iron

**Indoor:** Dining seating for 10 guests / Heaters / Fans / Fireplace / Bed Linen / Towels

**Media:** TV / DStv / DVD player / Music system / Wi-Fi

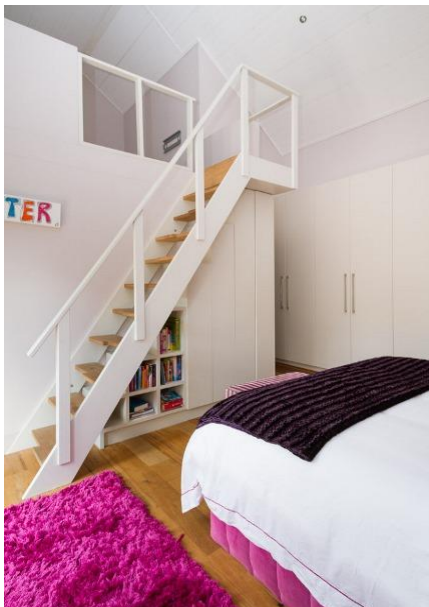
**Outdoor:** Swimming pool / Sun loungers / Parasol / Beach Towels / BBQ Facilities / Gas braai / Outdoor dining seating / Outdoor sofa

**Children:** Swimming pool safety net (on request) / Jungle Gym



### Reservations

Rates and availability are subject to final confirmation.  
A standard rental agreement applies.  
A 50% deposit is required to confirm a booking.  
A booking fee applies.





### Cleaning service

Weekdays	Cleaning service 3 times per week inclusive in the rate
Public holidays & weekends	Available on request at additional cost
Extra cleaning	Available on request at additional cost
Laundry	Personal laundry is not included
Pool and garden	Serviced once per week

### Additional Info

Breakage deposit	Applicable – confirmed on booking confirmation.
Parking	Double garage, and secure off street parking
Security	Estate is a security estate, guard on duty 24hrs, security system
Meals	No meals included. Self-catering only.



### GPS Co-ordinates

34° 2'8.75"S  
18°26'21.26"E

